



Architect's perspective of Shannon House Model

### INTERIOR INSPIRATIONS



Architect's perspective of Living Area



Architect's perspective of Dining Area



Architect's perspective of Master Bedroom

## MetroGate

PRIME SUBDIVISIONS

### Shannon

The Shannon house model is ideal for a large family. This house has been designed with spacious living areas that provide comfort and flexibility for everyone. Another reason to fall in love with the Shannon house model is that it also includes new normal home must-haves – al fresco area, a garden, separate bathrooms, and extra personal outdoor space.

#### HOUSE FEATURES:

Floor Area 154.00 sqm  
 Minimum Lot Area 120.00 sqm  
 Lot Dimension 10 x 12 m



3 Bedrooms  
 + Maid's Room

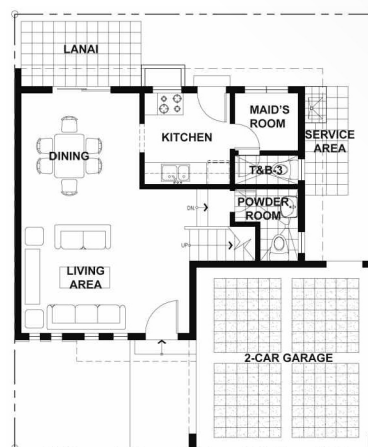


3 T&B  
 + Powder Room



2 Car Garage

#### FLOOR LAYOUT



Ground Floor



Second Floor

**DISCLAIMER:** The interior perspectives presented in this material are intended for design inspiration and are for a dressed unit. Our aim is to inspire clients with the design and provide them with ideas on how to utilize their spaces. Unless otherwise provided in the Contract to Sell, the interior furnishing, appliances, equipment, and special treatments are not part of the standard deliverables. Always check with an accredited Moldex seller or broker for information on standard deliverables and actual finishes.